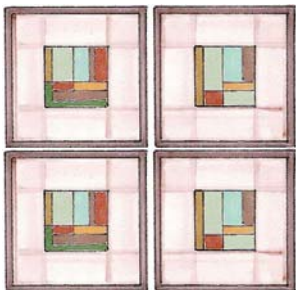


# Dwelling

## Designs

### Wall Décor



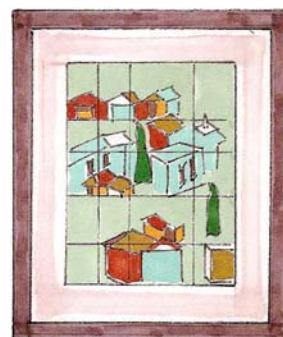
When selecting wall décor, choose items that reflect your personal style first – this will usually be your best bet. If you're not sure 'what' you should be looking for, let the palette of the room be your guide, and select items you will appreciate looking at.

If you prefer a formal look – then stick to a single color, style, or theme. For a more casual look – mix colors, styles, and textures. Occasionally, the only linking aspects of wall décor may be their variety and differences. Confidence is required for this type of application so it's best to seek professional help.

Vibrant colors create excitement, neutral colors soothe. Neutrals can be black, white, or sepia. In rooms that seem a bit lackluster, look for pieces that are inspirational such as objects or images relating to travel.

If you have the opportunity to select framing and matting for artwork – oils, prints, or photos – always consider what is best for the piece of art first, then think about the space it will be displayed second. To convey a sense of unity with a grouping of artwork, look for framing and matting that are the same or have similar qualities in color, texture, and/or size.

If you want to add interest in this type of arrangement, mix in other shapes – oval or round for example, or a wall mounted object that is represented within the artwork. To set a very inviting relaxed feel, mix the framing and matting on some or all of the pieces.



As far as hanging wall décor, there are no rules. The concept of one picture or object per wall space is a basic one at that. Don't be afraid to try something different. Regarding placement, eye level (approximately 60-inches from the floor to the center of the item) is a basic starting point – and that's it. Evaluate the architecture, furniture placement, molding details, etc. Place wall décor after all other decorating selections have been finalized.

Wall décor can be an inspiration for a decorating scheme, so take the size and placement of the piece into account when planning the space – especially if it's large. And don't ever hang an item on the wall 'just to fill a space'.



Here are a few additional tips:

- ◆ Don't simply relate the size of wall décor to the space it will occupy – there are times when a large piece placed on a small wall space looks amazing!
- ◆ Grouping many small items will have a larger presentation.
- ◆ Does the wall décor accentuate a focal point or can it make a statement on its own?
- ◆ Mirrors are tools of reflection – always remember that – so care needs to be taken with their placement.

Place frame bumpers on the back bottom corners and cover the hanging hardware with painter's tape prior to positioning wall décor – this will help to avoid scratches on the wall. Once you determine the position, remove the tape, hang, and enjoy!